



**2026 Haysville**

**Master Park Plan**



## Purpose

### **Purpose**

The Haysville Master Parks Plan is part of the City's *Comprehensive Plan*. It documents existing park facilities and open spaces, identifies future needs, and sets goals and priorities to guide improvements.

The Park Board is committed to providing safe, welcoming, and enjoyable outdoor spaces for residents of all ages.

### **Tree Board Responsibilities**

The Park Board serves as the Tree Board and oversees the City Tree Planting Program, which expands the tree canopy on City-owned property by planting nursery-grown trees. The program is designed to fit within current staffing, maintenance, and budget resources and meets Tree City USA standards.

## Project Priority List

- Replacement of an old structure with one free standing piece at Kirby Park
- Add agility equipment to the Dog Park
- Add Pour-in-Place Base to the following playgrounds: Cohlmia (HAC); Riggs Swings; Dorner Park
- Add 4-Square Courts to Cohlmia (HAC), Riggs and Dorner Park
- Add interactive musical equipment to Historic Park

## Riggs Park

Riggs Park contains approximately 19.5 acres. The Cowskin Creek forms its eastern boundary and extends approximately 2,200 linear feet along the park. There is a small, picturesque lake in the northern part of the park which occupies a large portion of the Cowskin Creek floodplain. The lake is stocked and is used regularly by citizens. A wide and relatively deep channel, which was an old meander of a creek, bisects the park and gives the lower half of Riggs some interesting topographic character. The City Hike & Bike Path was installed and curves through the park. With the installation of the path, antique style lighting, black wire benches and trash receptacles were installed to make this section uniform with other portions of the path. The lighting increases park security and extends hours of utilization.

The northern portion of the park has two shelters: Timberlane Shelter, an open picnic shelter, and the Lion's Club Shelter. Both shelters are on concrete pads and provide clean, attractive areas for picnic activities. The Lions Club Shelter is enclosed and has restrooms, kitchen facilities and an outdoor barbeque grill. Restroom facilities in the northern section of the park were remodeled in 2012, with an additional set of ADA compliant restrooms added to the south side of the existing facilities. These facilities are open year-round. Two off-street parking areas have been developed in the northern park and are accessible from Park Drive. The parking area to the west has a gravel surface and a capacity of approximately 25 to 30 vehicles.

The eastern parking area is paved and contains handicapped parking for 4 vehicles. The south portion of the park contains two picnic shelters: Riggs Shelter and the Police Shelter.

Riggs Shelter was rebuilt in 2003, and its design serves as the template for several park shelters built since then. These structures are brick and have ADA compliant bathroom facilities, which were engineered for favorable air flow to keep restroom temperatures tolerable, and to aid in odor control. The two shelters have electricity and water facilities available by key to renters of the shelters. A Band Shell is also available for rental and is used as a stage for a variety of events.

The south side of the park has a large, asphalt off-street parking lot, which can be accessed at two points from Hungerford. The parking area is not marked but is estimated to hold approximately 16 vehicles. There is adequate security lighting in the parking lot, and throughout the park.

Playground equipment is located throughout the park but can be viewed as consisting of two distinct areas. The northern area was redone in 2017 and consists of equipment meant to serve ages 2-5 years old. The southern area features a 6 bay-swing set and a main play structure area that was installed April 2024. There are two recycled benches for seating.

## Completed Improvements

In 2012 the pond was dredged to a depth of 6', and trees were removed from around the pond when this project was completed. The spillway was replaced with a recessed structure, and the well pump and fountain were replaced. The parking lot to the north was surface sealed in 2010. Damaged slides in the southern park were

## Haysville Parks Master Plan

replaced, and a nine-hole disc-golf course was installed throughout the park in 2011. The fence was removed around the horseshoe pits for easier maintenance. In 2015, the old swings and merry go round north of the south shelter were removed. A new 3-bay swing structure was installed with a concrete apron, drainage system and new wood chips. In 2015 a floating dock and sidewalk from the north parking lot was installed. This was to allow for ADA accessibility after a complaint was received after the rip rap was installed around the lake. In 2017, a drinking fountain was installed that has an additional attachment for canine usage. This fountain is located on the south end of the park by the hike/ bike path. In 2012 the north teeter-totters were replaced, the other equipment was replaced in 2017. This included a new slide, play structure and tire swing with a concrete border. Near this area, the Girl Scouts completed a beautification project on the WWII Veteran's Memorial. Additional larger rip rap was placed around the lake in 2018. In 2024 the south playground equipment was replaced and pour-in-place surfacing was installed. ADA swing installed

## Planned Improvements

- Replace the gravel road with a twelve-foot concrete roadway.
- Replace the water main.
- Add a concrete 4-square game.
- Replace horseshoe pits with pickleball courts.
- Replace the two benches in the northern park area that do not match the standard.
- Mark gravel parking lot to bring it to ADA compliance.
- Landscaping is deemed complete, but continual maintenance on areas such as the concrete H is a necessity.



## History

Harley and Mildred Riggs were the original owners of the park area. The city grew around their land. Before being taken into the city, Harley platted his ground, and in the original plat there were three streets to be named for his three grandchildren - Sarah (Lane), Christine (Court) and Larry (Drive). Larry Drive was eventually omitted for drainage purposes. The northern 11 acres of the park were originally platted as Timberlane Park when that addition was developed. The dividing line between the two parks was described as an old drainage tributary that extended from the Park Drive and Timberlane Drive Intersection almost directly east to the Cowskin Creek. In May of 2015 the Park Board voted to combine the two parks into one, in accord with popular perception of the entire area as Riggs Park.



## Fred A. Cohlma Memorial Park & Dewey Gunzelman Swimming Pool

Fred A. Cohlma Memorial Park contains approximately 7 acres and is located along the east bank of the Cowskin Creek. Approximately 650 linear feet of Cowskin Creek make up the park's west boundary. The park is relatively flat over its total area. The Dewey Gunzelman Swimming Pool is located within this park. The park contains a playground area designed for 5-12 year olds with shaded seating, two sand volleyball courts with lights available for after-hours usage, a drinking fountain, security cameras and a bike rack. A portion of the City's Hike & Bike Path runs parallel to the Cowskin Creek.

The Dewey Gunzelman Swimming Pool, constructed in 1993, is an eight lane 50-meter offset "L" shaped swimming pool. The diving bay includes both one-meter and three-meter diving boards, and a drop slide.

The shallow end of the main pool has a 160-foot blue slide and an ADA compliant chair lift. The intermediate pool includes a small water slide and baby pool. The pool also has a concession stand, picnic tables, seven shade structures, benches and showers in the bathroom facilities. A new parking lot located south of the HAC provides ample parking to serve the needs of patrons for the HAC and pool. Additional parking is located north of the swimming pool on Sarah Lane.



## Completed Improvements

- In 2008 installation of a splash pad was completed on the northwest corner of the pool.
- Two benches, a shade structure and fencing were installed. The fencing was constructed so that citizens can access the splash pad when the pool is closed.
- In 2013 a sidewalk was added along the south side of the volleyball courts from Clinton Ave to the Hike and Bike Path.
- In 2017 on-street parking was added during construction of the Activity Center, a second sand volleyball court and a bike fix-it station.
- In 2018, a new playground was installed, a drinking fountain, 2 canopies and security cameras. Bike racks were installed next to the HAC and the playground. 7 trees were planted as part of the Arbor Day Tree Planting.
- In 2019, picnic tables with ADA accessibility were purchased for the pool concession stand. Deck chairs were purchased for patrons to use.
- In 2021, a Gaga Pit was built as an Eagle Scout project by Ben Woodworth.
- In 2022, the PVC pipe around the sand volleyball courts was replaced with concrete. Permanent concrete cornhole boards were installed next to the volleyball courts.
- We-Go-round ADA installed in 2026.



## Planned Improvements

- Add a concrete 4-square game
- Pool Study (Aquatics feasibility)
  1. Potential Improvements based on community input.
  2. Indoor pool and improvements to outdoor pool are large ticket items. A large amount of funds would have to be committed over multiple years.
  3. An aging pool will eventually have to be addressed.
- An additional parking lot could be added for overflow parking to the north of Sarah Lane.

## History

Fred A. Cohlmiia was a local businessman and supporter of the community. He owned Cohlmiia's Clothing Store. Dewey Gunzelman Swimming Pool was named after Dewey Gunzelman, who lived north of the floodway. Before Haysville had a public pool, he owned a private pool which he opened up for use by area children.

## Plagens-Carpenter Park/Sports Complex

Plagens-Carpenter Park consists of 30 acres located south of 63rd Street and west of Mabel Street. Four multi-use diamonds exist on the north section of the land with a storage area and concession stand in the middle. Field 1 and 3 are home to the Campus High School Colts and the Haysville Aviators Collegiate baseball teams. This field has an announcer box and flagpole for use during games. Two multi-use diamonds are located to the south, that also serve as practice fields for the Campus softball team. Two youth-sized diamonds are located to the east. When HJBL dissolved in 2014 the HAC took over the youth baseball and softball program. A sign was placed at the fields at Nelson Elementary in 2011 when they were named after Carl Hall, a Campus High graduate that played baseball. With the completion of the two east fields in 2016, the sign was moved to Plagens-Carpenter. Two batting cages are located between fields 2 and 3. All the fields have irrigation systems.

The park area of Plagens-Carpenter Park includes two shelters. The main enclosed shelter was built in 2003, adhering to the template used in the other City parks. The second shelter was built as an Eagle Scout project and is not enclosed. The basketball court is in the southeast corner of the park. The parking lot is gravel and extends the entire length of the park, east to west and south along field six. A smaller parking lot is located to the north of field eight. Although not marked, the parking lots can hold approximately 300 vehicles. The parking lot must remain gravel to maintain FEMA Floodplain requirements, but ADA compliance needs to be evaluated.

## Completed Improvements

Fields 5, 6, 7 and 8 were added, completing the design. An announcer box and flagpole were added to field 1 in 2011. Yellow capping and irrigations systems have been added to all fields. Three additional storage sheds have been installed for equipment. Additional bleachers have been added to fields 1, 5, 6, 7 and 8. Concrete pads were added and sidewalks going to 7 and 8. In 2016, new score boards were added on fields 2, 3 and 4, along with an LED sign on field 1. In 2017, a new scoreboard was installed on field 1. At this same time WIFI coverage was expanded with a second access point placed on the new scoreboard. In 2022 shade structures were installed over the bleachers on all fields and the dugouts on fields 5/6. In 2022 the block walls were removed in front of the restrooms doors and concrete was installed in the walkway between fields 3 and 4. In 2023 the playground equipment and swings were replaced. Another storage shed was added. Canopies were added to fields 1-4 plus concrete bases. In 2024 the sidewalk system was completed connecting this area to the cities pathway system.

## History

The park was named after Otto Plagens and Jack Carpenter who the city purchased the front 10 acres of land from. The back 10 acres were purchased by the Sunflower Improvement district for park land. The original name of the park was Carpenter-Plagens.

Jack Carpenter asked for the name to be changed to what it is today. In 1987 dirt work began, in 1994 the first ball game was played on Field 1. Fields 1 and 2 were completed at that time. In 1998 fields 3 and 4 started construction and they were completed after tornado damage in 1999. The Concession stand was completed around 2000.



## Haysville Parks Master Plan Planned Improvements

- Consider play ability improvements for field 1 (Reduce field size, new dugouts, bullpens fencing, turf). Make playability improvements to field 1 as communicated by USD261 and Haysville Aviators.
- Mark lines on the curb of the parking lot to accommodate additional parking. Evaluate the parking lot and any construction on fields 5 and 6 with FEMA guidelines.
- Repaint the small shelter in the park.
- Install a drinking water fountain next to Carl Hall fields.
- Construct restroom facilities between the south and east fields.
- Add concrete pads to the bleachers on fields 5 and 6.
- Install protective netting between fields.
- Finish the concrete to the dugouts around the concession stand area.
- Add lighting to fields 5 and 6.

## Orchard Acres Park

Orchard Acres Park is located on South Ward Parkway to the west of the Orchard Acres Addition and north of the South Field Addition. It is a long, narrow parcel and contains approximately 3.0 acres. Most of the site is relatively flat and is bordered on the west by a 60-foot-wide drainage channel. On the north end of park is a concrete basketball court. In the middle is a small open shelter with picnic tables next to a large playground area. On the south end (Southfield addition) is the main shelter, built in 2003, which adheres to the template used in the other City parks. The Old Oak disc golf course runs through this park as well. There is parking available along the street.

## Completed Improvements

The playground area has been updated with a new drainage system, new wood chips, a concrete apron and three additional pieces of equipment. The open shelter next to the playground was repaired and repainted. Three additional trees were planted next to the basketball courts as a part of the Arbor Day Tree Planting in 2018. The merry-go-round was replaced in 2024. Wooden picnic tables were replaced with recycled materials tables.

## History

Mary and Leon Miller were the original owners of the land, Charlie June was the developer. Mike Dirck platted and developed the Southfield addition.





## Pear Tree Park

Pear Tree Park is in the east central portion of town between North Marlen Drive and Moy Avenue. Much of the site contains a major drainage channel; however, there are two parcels that are flat and large enough to contain facilities. One has been developed into Pear Tree Park, the other Whisler Park, which will be discussed later. Pear Tree Park contains a shelter, basketball court, playground area and sprinkler system. The shelter was built in 2003 and adheres to the template used in the other City parks.

## Completed Improvements

In 2015, the outdated playground equipment was removed. New equipment, along with a new drainage system, wood chips and concrete apron, were installed. The equipment is suited for ages 5-12 years old.

## History

The original owners were the Hurley's. Marlen and James McIntosh purchased the land from them. The McIntosh's owned a realty company next to the current Noah's donut shop. McIntosh did not finish the development.

## Whisler Park

Whisler Park is located just north of Freeman Avenue at the location where the drainage channel exits the Pear Tree Addition. The site is approximately .4 acres in size. The park contains an open shelter and toddler play equipment for ages 2-4 years.

## Completed Improvements

In 2016, on street parking was installed. New toddler playground equipment was installed, as well as two expression swings. In 2017, irrigation design and repairs were made.

## Planned Improvements

- Install a splash pad.
- Add benches and smaller sunshades near the spray ground.
- Install a drinking water fountain.
- Plant additional trees throughout park.

## History

The area was platted with the Pear Tree addition. Marlen and James McIntosh platted the property. The park was renamed in memory of Norman Whisler, who died in August 1998. Norman lived next to the park on Moy Street. The original park had trees, a swing set and slide that were dedicated to his memory.



## Old Oak Park

Old Oak Park is in the Old Oak Addition next to the Public Works main office on South Jane Street. Most of the park consists of a spring-fed lake and the banks surrounding it. The banks have been cleaned and lined to accommodate fishing.

## Completed Improvements

An 18-hole disc golf course has been installed in the park with assistance from the Air Capitol Disc Golf Association. The course includes tees for both amateur and professional golfers. In 2015, an aerator was added to the lake due to prevent algae growth. In addition, a dock was added to allow access to the middle of the lake for fishing and ADA accessibility on the east side of town. In 2016, two sets of launching pads were poured for each disc golf hole. Steppingstones were also added at the south end of the ditch so players can cross over to the connecting shelter. Signage was completed for both the short and long tees. Signage with rules was placed near the Public Works office. A bike fix-it station was installed near the Public Works building in 2017. In 2020, the dock was moved to the lake in Dorner Park due to the inconsistency of the water level.



## Planned Improvements

- Install a drinking water fountain next to the repair station.
- Plant additional trees throughout the park.

## History

Delos Nelson was the original owner of the land which was purchased by Lusk development.

W.E. Lusk Jr developed and platted the area. The pond and skate park were included in the Old Oak development.



## Chris Elsen Memorial Skate Park

The Chris Elsen Memorial Skate Park was opened in May of 2005 and funded by the Haysville Park Board. The park contains a half pipe, quarter pipe, two moguls, and grinding bar. A portion of the Hike & Bike Path leads to the park, and a basketball court is located adjacent to the park.

## Completed Improvements

In 2018, new lighting was installed, along with security cameras.

## Planned Improvements

- Evaluate equipment to determine which pieces should be replaced.
- Expand existing equipment to increase BMX track capabilities.

## History

In the spring of 2005, Tim Elsen, brother of Chris Elsen (middle school student who had recently passed away due to a heart condition), approached Park Board to discuss the possibility of naming the new skate park in memory of his brother. Skateboarding was one of Chris's favorite pastimes. City Council approved this decision, and the park was named in Chris's memory.



### Kirby Park

Kirby Park is located east of Chatta Drive, south of West Leonard. The park contains approximately 4 acres, is flat, and drains to the east. The Kirby Shelter was built in 2003, adhering to the template used in the other City parks. The first playground equipment was based off the same template as the other parks in 2003. A basketball court sits at the northeast corner of the park, and practice soccer fields are located to the east. The park has an irrigation system, and a pond is situated at the southeast corner of the park, extending through the surrounding residential development. The pond is maintained by the city.

### Completed Improvements

Trees have been removed from the banks as the pond has matured. Two additional pieces of playground equipment were purchased and installed in the play area along with a concrete apron, drainage system and wood chips in 2015. In 2016, a new teeter totter was replaced, and rock lining was placed around the lake.

### Planned Improvements

- Install a drinking water fountain on the shelter building.
- Install a spray ground similar to the splash pad at Fred A. Cohlma.
- Plant additional trees in the area.

### History

Howard Rischel owned and developed the Peachwood addition (Grand to 4th street) which tied into the Southampton development. The original owners of the Hampton property were Marcell and Melvin Hampton Sr.; they platted the pond for park space. The city bought the park land from Hampton for dedication in conjunction with the Peachwood development. The park was named after DL Kirby who worked for public works that died in early 1980's. The swing set was later donated by Curtis Hampton in memory of his daughter, Stephanie Hampton Downing, who passed away. The HOA requested a dock be added to the lake similar to what was installed in Dorner and Riggs Park. Prices were provided and discussion with the HOA included the fact the dock would have to allow public access, and which has been an issue in the past with fishing. No action was taken.



**Kirby Park and Shelter**



**Kirby Park Shelter**

## WW Hays Historic Park

On August 1, 1891, W.W. Hays and his wife Juliet platted the land they owned so that the town, later known as Haysville, could begin. This area was 161.5 acres located at E 1/2 NE 1/4 of Section 6 and W 1/2 NW 1/4 of Section 5, Township 29 Range 1 East, Sedgwick County. The original plat included Lots 1 through 28 running along what was called Main Street (now called South Main). In March of 1898, Haysville First Addition, which included Lots 1 through 15 on Hays Street, was platted. A small town boasting a lumberyard, blacksmith shop, two stores and a meat market had been founded.

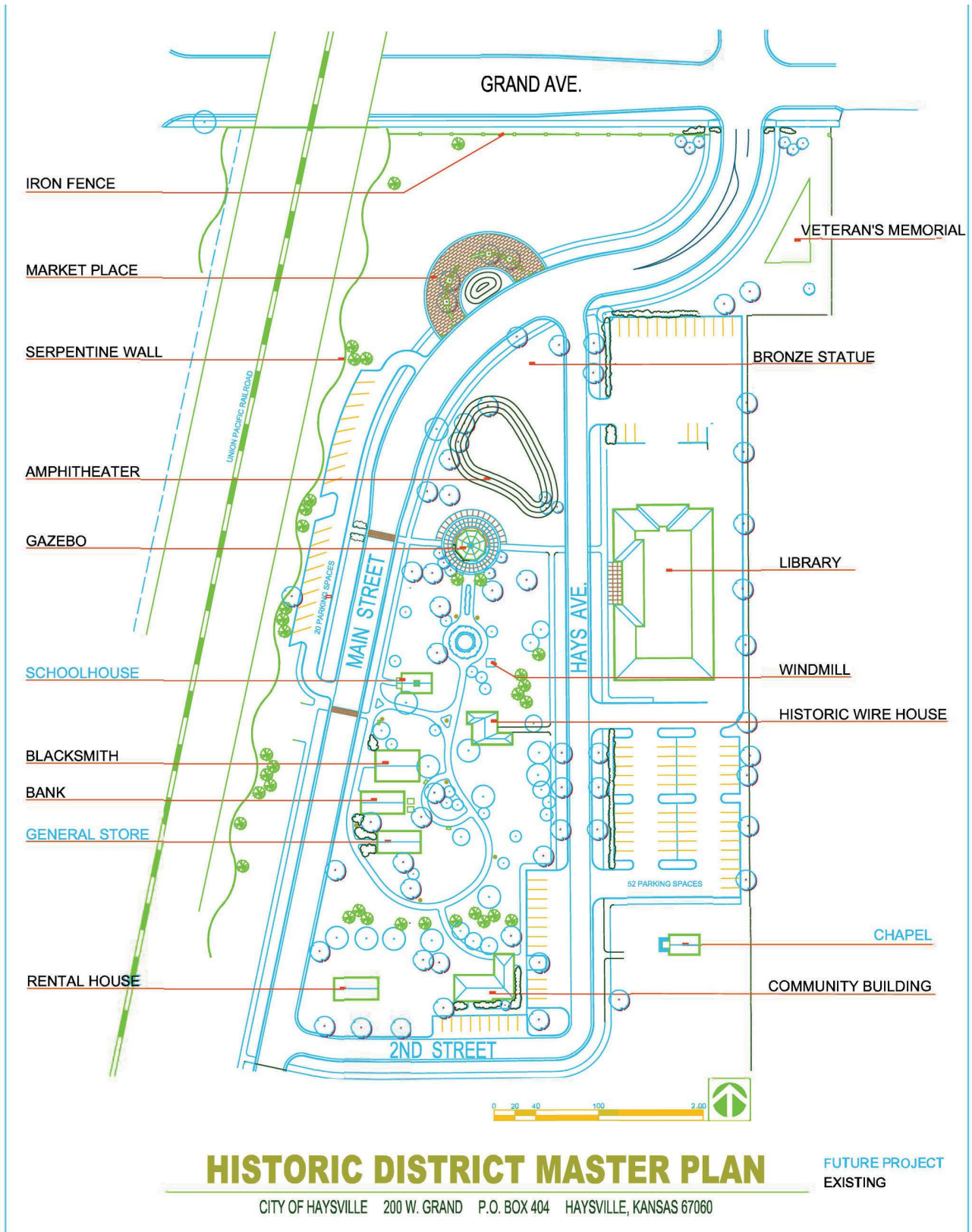
In 1999, this area of “original” Haysville was destroyed by a tornado. In the aftermath, the City of Haysville designated the devastated area a park, naming it W.W. Hays Village Historic Park, and adopted a Master Plan to guide development within the area. The park now includes the Wire House, Blacksmith Shop, Haysville State Bank and accompanying outhouses, John Deere Tractor, Library, Community Building, Hometown Market, Historic Gazebo, perennial gardens, a windmill, walking path, and rental house.

## Completed Improvements

Existing and planned buildings are shown on the map. In 2019 the Wire house was re-sided and painted and the porch was replaced, portions of the Community Building were re-sided and painted, the Historic bank was remodeled and turned into an office. In 2020 a Veterans Memorial was completed. In 2023, walking tour signs were added. In 2023, permanent lighting was added to the buildings. In 2026, the walking path was paved to make W.W. Hays Historic Park more ADA accessible.

## Planned Improvements

- See map for future additions, a large amount of funds would have to be raised to complete this plan. The feasible vs. cost would have to be looked at.
- Add inclusive playground equipment along the path.

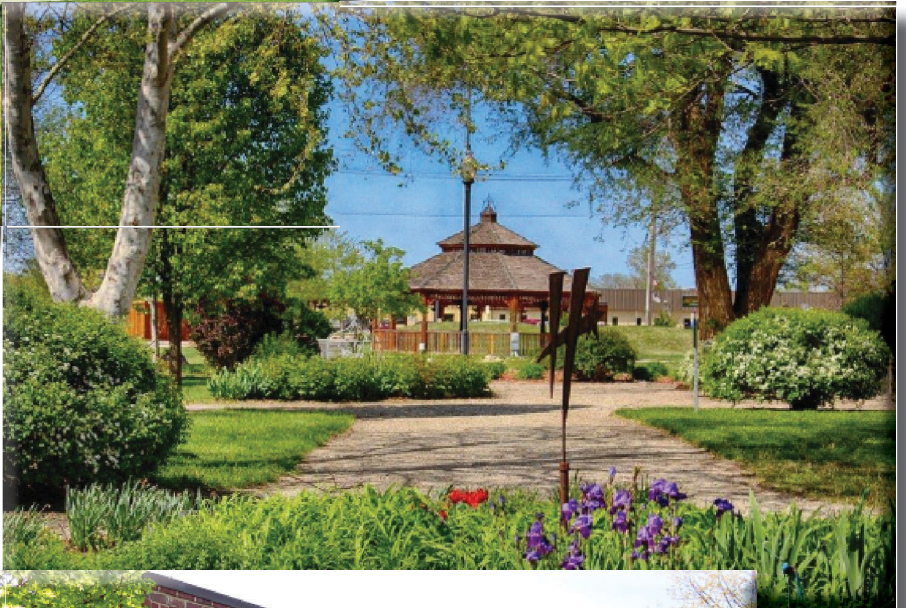


**HISTORIC DISTRICT MASTER PLAN**

CITY OF HAYSVILLE 200 W. GRAND P.O. BOX 404 HAYSVILLE, KANSAS 67060

FUTURE PROJECT  
EXISTING

# Haysville Parks Master Plan



## WW Hays Historic Park History

### Perennial Gardens

Dedicated citizens have worked many hours planting and maintaining the beautiful gardens in the park. There are several memorial plaques located throughout the park:

- WWII Veterans on behalf of Kever Wire VFW 6957
- Claire Shipe (May 2, 1941 - January 2008)
- Kenneth D. Lewis (March 28, 1939 - September 26, 2001)
- Allan E. Cooley (July 5, 1935 - August 3, 2002)
- Phillis Cooley (July 22, 1936 - July 25, 1999)
- Howard K. Ragland (June 2, 1927 - January 11, 2005)
- George Beard (December 31, 1925 - March 31, 2002)
- Howard Cook (October 30, 1939 - August 27, 2008)
- Robert P. Davis Sr. (September 12, 1922 - February 8, 2001)
- Imogene Rardin (October 14, 1936 - August 19, 2008)
- Eunice P. Schenk (June 9, 1923 - November 17, 2004)
- Clarence J. Schenk (July 9, 1923 - November 25, 2003)
- Mildred L.J. Davis (August 12, 1925 - February 11, 2002)
- Carol Jean Huff (January 31, 1947 - June 9, 2007)
- Cary D. Waters (April 4, 1949 – January 15, 2021)
- Richard Parton (December 10, 1966 - October 14, 2021)
- Jack Ferguson (September 26, 1938 - May 24, 2023)

### Haysville Library

The Haysville Community Library was established by referendum of the voters in April 1977. Betty Cattrell was named Director in June and served as the only staff member. The library was initially housed in the Hemphill School building, built in 1948. Private donations supplied books and materials, and in 1978, the library became part of the Kansas Library System. In 1993, the library moved into a new 10,000 square foot building, which was partially destroyed in the devastating tornado of May 3, 1999. Then, in July of 2009, the library moved into its present home in the heart of Haysville's Historic District.



## Chapel

In 1893, the Hays family donated 10 lots in what is now the Historic District for the Prairie Home Christian Church and the Methodist Church. The Methodist Church was built at the corner of Hays and Grand and the Christian Church was moved from its original location south of 63rd and Broadway to First Street between South Main and South Hays. These two chapels were destroyed in the 1999 tornado. The District has become a popular site for weddings. The Historic Committee is planning to either build a replica of the Methodist Church or bring in a salvaged historic church. Building a chapel was looked at in 2019 and was not deemed feasible at the time.

## Pride Park

Pride Park is located at the intersection of Main & Grand and is a showcase of Haysville. This is a passive park with a water fountain located at its south end. The fountain features two sculpted metal Haysville signs and illuminated water shows that run at set times. The fountain opens yearly in early May and runs until the end of October, depending on weather. Between the fountain and the north flower bed is a colored brick-patterned concrete patio with four benches. A portion of the Hike & Bike Path borders the park. The park has a sprinkler system and is equipped with trash receptacles.

## Completed Improvements

The long-awaited water fountain was completed in 2014. The area has been landscaped with grass, flowering plants and trees. In 2016, fountain lights were repaired, and the interior was painted. In 2017, a new drinking fountain, bench and bike rack were installed. In 2018, the fountain interior was repainted. The “Haysville” sign was sandblasted and painted black. In addition, a new transmitter was installed on the Vickers building providing WIFI coverage to Pride Park.

In 2019, the Vickers Building was recognized as a local historic site under the state and national registry. In 2020, the Economic Development Office was moved back into the Vickers building. The carpet was removed to take the building back to the original flooring style and a historical marker was installed near the sidewalk. In 2022, the exterior of the building was repainted, and the roof was cleaned. Permanent lighting was installed in 2023.



## Planned Improvements

- Install a statue in the North flower bed.

## History

The Vickers Building and surrounding area were damaged in the May 1999 Tornado. The building was renovated by the city in 2006 and has since been home to the Economic Development Director and the Chamber of Commerce. With the improvements, restrooms were installed which can be accessed from the exterior by citizens.

The park name was chosen through a contest in December of 2008. The water fountain was planned for several years before its construction in 2014. The conceptual design of the fountain was done by Teri Farha. There is a memorial plaque for Nancy Bennett on one of the park benches. In 2026, the fountain was repainted.



## L.W. Roberts Park

L.W. Roberts Park is located in an old meander between the Cowskin Creek and Van Arsdale from 2nd Street to Spring Drive. It contains approximately 3 acres and much of the area is old Creek channel. The upland area of the park is undeveloped, except for an area adjacent to Stewart Drive on the west. This area has been planted with shade and ornamental trees. L.W. Roberts Park is designated to be a naturalistic facility due to its meandering path and limited drainage.

## Planned Improvements

The current arrangement of trees prevents the park from being utilized. By selectively clearing trees the area could be developed into a nature trail. Possibly look at a future study for a playground.

## History

Larry W. Roberts was the president of Roberts Mortgage. The company donated the property when the land was platted and the park was named after him. Roberts Mortgage was the original owner.

## Reserves A & B

These two small undeveloped park areas are located adjacent to 2nd Street between Peachwood Drive and Meridian Avenue. Each parcel is about .12 of an acre. Due to their small size and the busy arterial street bordering both parcels on the west, active recreational facilities would be inappropriate. Their best use appears to be in a purely aesthetic role, providing a welcoming entrance into the Peachwood Subdivisions from Meridian. A new sidewalk was added on the east side of Meridian from Grand to Chelsea Street.

## History

The land was dedicated when the property was platted as Peachwood second addition.

## South Brooke Park

This tract of land is located in the South Brooke Addition to the east of Dorner Park and south of Orchard Acres. Most of this area is used for overflow drainage of the Cowskin Creek and not suitable for active recreation. One of the main goals was connecting the South Brooke Addition to the rest of the hike and bike path in the City.

## Completed Improvements

Development of Dorner Park began in 2014. In 2016, the hike and bike path connection between Old Oak and Orchard Acres was extended down to the middle of the soccer fields on the west side of the creek. A foot bridge and sidewalk were installed over the creek thus connecting South Brooke Addition to Dorner Park and Old Oak Addition.

## Timberlane North Park

Timberlane North Park is located on the northwestern boundary of the City in the Timberlane North Addition. It can be accessed from Caleb Street or Aspen Street. The majority of the park is a detention pond and its surrounding banks. The land is planted with Bermuda grass to absorb and resist heavy water flows from Aspen Street, preventing erosion of the pond banks. This area does have a sprinkler system.

## Planned Improvements

- Remove dead/diseased trees and plant new trees. Protections for the Northern Long-Eared Bat will affect tree removal and will require monitoring.
- Local residents have expressed a desire to replace the existing Bermuda grass with a Fescue blend. However, until drainage issues are resolved, Fescue and similar grasses would be washed away with heavy rains or storms, leaving substantial erosion damage.

## History

This park was dedicated when the land was platted as Timberlane North Addition.

## Randal L. Dorner Park

Dorner Park is located near the intersection of 79th St South and Broadway. The entrance to the park is graced with the Randy Dorner Memorial. Dorner Park is an 80-acre plot which contains eight youth soccer fields, a concession stand and two 24 hour restrooms. The soccer fields are used by the Recreation Department for league games. On the west side of the park, a dog park with separate areas for small and large dogs has been constructed. There are over 1.5 miles of bike path that tie into the main bike path at the north side of the park. On the south side of the park there is a 10-acre lake with a dock.

## Completed Improvements

In 2016, dirt work, sprinklers and grass seed were installed on the north four soccer fields. Some of the dirt work was completed on the south fields as well. The sidewalk was completed connecting Old Oak to South Brooke along with installing a footbridge to cross over the creek. In 2017, 6 new trees were planted as part of the Arbor Day Tree Planting event.

The soccer fields were completed in the fall of 2018. The road and parking lot to the west of the fields were paved. Soccer began playing there in the spring of 2019 and the concession stand was completed in the fall. The dog park opened in October. The access road and parking lots were paved.

In 2020, 4 canopies were added around the lake with picnic tables and grills, and additional parking was added to the south of the soccer fields. The Angel of Hope memorial, Trout Shelter and a playground was built north of the lake in 2020.

In 2021, restrooms were built north of the lake, and the Dorner memorial was built at the entry. In 2022, Security cameras were added near the playground and shelter. Pickleball and sand volleyball courts were built, lighting was installed along the lake and wifi added along the north side of the lake. A bicycle repair station was near the lake restroom. WiFi was added in 2022. Aerator fountains were added in 2023.



## Planned Improvements

- Added four bike racks around the park in 2025.
- Add agility equipment to dog park.
- Add a concrete 4-square game.
- Add more pickleball courts.
- Add additional parking to the east of the lake.
- Build additional practice fields.
- Planted 32 trees in 2026

## History

Randy Dorner was the Public Works Director for Haysville for 26 years. Randy passed away in 2017, his last project with the city was the installation of the 79th St Park Bridge. After his passing the park land was dedicated to Randy for his service to the City of Haysville. Upon the dissolution of the Peach Capitol Soccer organization, the Haysville Recreation Department assumed the role of offering a youth soccer league. The Recreation Department originally ran the soccer program on the old Peach Capitol Soccer fields near the water tower which was owned by USD 261. Due to school expansion, we lost access to this ground in 2016 and moved play to Dorner Park in the spring of 2019.





## Country Lakes Park

Two acres of land was set aside on the west side of Country Lakes for future development. The playground equipment is similar to what is in other neighborhood parks.

## Planned Improvements

Playground equipment was approved and purchased in 2022. The equipment, canopies, and picnic tables were installed in 2022. An irrigation system will be installed around the playground area in 2023. Park will be evaluated for future needs.



## USD 261 Facilities

The track at Haysville Middle School and Haysville West Middle School are open for public use.

## Future Park Land Needs

As of 2023, the total amount of dedicated park land within the city is approximately 159 acres. According to the 2020 Census there were 11,338 people living in Haysville at the time of the enumeration. Assigning a standard acreage in relation to population is no longer a nationally accepted standard of measuring park supply satisfaction. The quality of park development is more important than quantity, which is why the city is choosing to accept cash payments in lieu of park land dedication when new sub-divisions are being platted. One of the goals of the city, when acquiring park land, should be to acquire reasonable sized parcels of at least 10 acres to be used for recreational purposes, well in advance of need. New residential growth patterns appear to be to the west and south of existing development, and developers should be encouraged to set aside parcels in these new growth areas to create facilities such as Country Lakes. Emphasis has been put on improving existing recreational facilities.

Plagens-Carpenter Park has become a jointly used facility for both the Haysville Recreation Department and Unified School District 261. In 2015, the Recreation Department took over the youth baseball/softball sports program. With the completion of the two youth fields in 2014, the park can serve as a great asset for building the Recreation Department, bringing people into the community, and meeting long-range needs. The fields behind Nelson Elementary are also now open to the community for practice as scheduled through the Recreation Department. These fields also serve as practice fields for the Recreation Department's youth league.

Hike and Bike Path improvements throughout the city have been considerable and provide a great mode of transportation and aesthetic value. The city should continue to build upon the 14.62 miles of pathways. Links should be included in planning new subdivisions. The River Forest bicycle/pedestrian path in 2015 is a great example of a missing link that was completed from Delos to the north Main area. Another example is the completed path on the west side of South Meridian in 2017 and 2023. This connected the County Lakes development into the system. Future plans include adding a bicycle/pedestrian path on the west side of Seneca to Mabel. This link will connect Ward's 4th Addition to the rest of the city. The park map shows the plan for making these connections.

## Tree Board Responsibilities

The Park Board is responsible for overseeing the City Tree Planting Program intended to expand tree canopy on City-owned property through the purchase and installation of nursery-grown trees. The program is structured to remain within existing staffing, maintenance, and budgetary capacity while providing immediate and long-term canopy benefits. This plan should meet the requirements of the Tree City USA standards.

## Background

The City has experienced tree loss due to removals, storm damage, disease, and natural decline. Replacing lost canopy and improving shade in high-use public spaces has been identified as a priority. Public Works evaluated planting strategies with a focus on long-term survival, maintenance workload, and operational feasibility, and developed a program centered on purchasing properly sized trees from commercial nurseries rather than growing trees internally.

## Program Overview

The City Tree Planting Program establishes a controlled annual planting effort using nursery-grown trees that can be properly installed, watered, and maintained. Limiting annual planting quantities ensures trees receive appropriate care during the establishment period and avoids creating an unsustainable maintenance obligation.

Key program parameters include:

- Annual purchase and planting of approximately 25 to 40 trees
- Tree size of 1.5-inch to 2.5-inch caliper
- Trees sourced from reputable commercial nurseries meeting industry standards
- Planting limited to City-owned property only, excluding the public right-of-way
- Two-year establishment period with defined watering and inspection requirements

## Survival Rate Considerations

Tree survival during the first two growing seasons is the primary driver of long-term canopy success and overall program cost. Industry standards and municipal forestry experience consistently show higher survival rates for properly planted nursery-grown trees.

Typical survival expectations:

- Nursery-grown trees in the 1.5-inch to 2.5-inch caliper range typically achieve survival rates of approximately 85 to 95 percent after two years when properly planted and watered
- Small sapling or seedling plantings in urban and park environments commonly experience survival rates in the range of 50 to 65 percent without intensive maintenance

Higher mortality results in increased replacement costs, additional labor demands, and delayed canopy benefits. The City Tree Planting Program is structured to maximize survival and predictable outcomes.

## Priority Planting Criteria

Planting locations will be selected to maximize canopy replacement and public benefit. Emphasis will be placed on replacing lost trees and improving shade where it is most needed.

Priority criteria include:

- City-owned locations where trees have been removed or have died
- High-use parks and public spaces lacking adequate shade
- Sites with sufficient soil volume to support mature canopy trees

Initial priority areas include Riggs Park, Dorner Park, and City-owned parcels within the Historic District.

## Species Selection

Tree species were selected based on proven performance in south-central Kansas, adaptability to urban conditions, and long-term durability. A mix of canopy sizes is included to match site constraints and desired outcomes.

Species diversity limits:

- No more than 10 percent of total trees planted shall be a single species
- No more than 20 percent of total trees planted shall be from a single genus

Recommended species include:

Large canopy trees (approximate mature canopy spread 50 to 75 feet):

- Bur oak
  - Genus and species: *Quercus macrocarpa*
- Shumard oak
  - Genus and species: *Quercus shumardii*
- Swamp white oak
  - Genus and species: *Quercus bicolor*
- Hackberry
  - Genus and species: *Celtis occidentalis*
- London planetree
  - Genus and species: *Platanus × acerifolia*
- Disease-resistant American elm cultivars
  - Genus and species: *Ulmus americana* (cultivars)

Medium to large canopy trees (approximate mature canopy spread 35 to 50 feet):

- Kentucky coffeetree
  - Genus and species: *Gymnocladus dioica*
- Ginkgo (male cultivars only)

- Genus and species: *Ginkgo biloba*
- Baldcypress
  - Genus and species: *Taxodium distichum*

Small ornamental canopy trees (approximate mature canopy spread 15 to 30 feet):

- Eastern or Oklahoma redbud
  - Genus and species: *Cercis canadensis*
- Japanese tree lilac
  - Genus and species: *Syringa reticulata*
- Disease-resistant crabapple cultivars
  - Genus and species: *Malus* species and cultivars

## Excluded Species

Certain tree species, while capable of growing in this region, are excluded from routine City planting due to long-term maintenance, safety, or performance concerns in public spaces.

Excluded species include:

- Black walnut
  - Genus and species: *Juglans nigra*
  - Large canopy (50 to 75 feet)
  - Excluded due to juglone toxicity, large nut drop, and maintenance and safety concerns
- Callery pear and related ornamental pear varieties
  - Genus and species: *Pyrus calleryana* and cultivars
  - Medium canopy (30 to 40 feet)
  - Excluded due to poor branch structure, frequent storm damage, and invasive tendencies
- Silver maple
  - Genus and species: *Acer saccharinum*
  - Large canopy (50 to 70 feet)
  - Excluded due to weak wood, aggressive surface roots, and higher long-term maintenance requirements
- Cottonwood species
  - Genus and species: *Populus* species
  - Very large canopy (70 feet or more)
  - Excluded due to brittle wood, excessive debris, and short urban lifespan
- Willow species
  - Genus and species: *Salix* species
  - Large canopy (50 to 70 feet)
  - Excluded due to weak wood and high failure rates in park settings
- Tree-of-heaven
  - Genus and species: *Ailanthus altissima*
  - Medium to large canopy (40 to 60 feet)
  - Excluded due to invasive growth habits and aggressive root spread

## Planting Schedule and Timing

The preferred planting window is late fall, after leaf drop and before the ground freezes, generally from mid-October through early December. Early spring planting, generally from late February through early April prior to bud break, is an acceptable alternative. Planting from May through August will be avoided due to heat stress and reduced survival. Evergreen planting, if used in limited cases, will occur in early fall or early spring.

## Maintenance and Watering

Each tree will be maintained under a defined establishment plan for a minimum of 24 months. Watering frequency will be highest during the first growing season and taper during the second year. Monthly inspections during the establishment period will be conducted to improve survival and address issues early.

## Soil Testing

Routine soil sampling is not required prior to planting. Tree success is driven primarily by planting depth, watering, soil volume, and protection from mechanical damage. Targeted soil testing will be used only when site conditions indicate potential issues.

## Haysville Bicycle and Pedestrian Master Plan

The bicycle pedestrian advisory committee was formed in 2015 to support community education regarding bicyclist and pedestrian issues and to advocate for safe access to sidewalks, pathways, and/or roadways for bicyclists and pedestrians. In 2021, this committee was dissolved, and duties were assumed by the Park Board. The Bike and Pedestrian Plan was created from the vision of the committee and was initially adopted in 2017. It is made as part hereof the Master Park Plan.

## Bicycle Rack Current Locations

- Riggs South Park
- Library
- HAC/Pool Area
- City Hall
- Vickers Building
- Senior Center
- Police Station
- Dorner Park

## Future Bicycle Rack Proposed Locations

- Plagens-Carpenter Park
- Splash Pad
- Historic District
- Rex Practice Fields west of Colt Stadium
- Old Oak Park

### **Bicycle Rack Fix-it Stations Locations**

- Haysville Activity Center
- Public Works Office
- Vickers Building
- Dorner Park

